



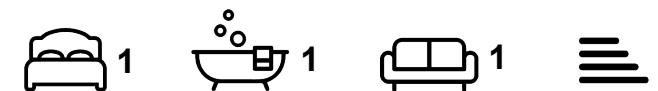
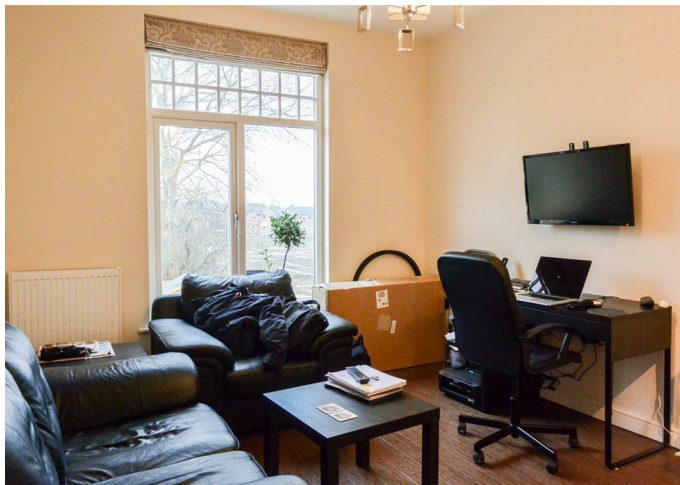
Apartment

# FLAT 6, 16 ASH GROVE, HYDE PARK, LEEDS, LS6 1AY

Per Week

## £190 Per

FEATURES



**SJM** ©  
**PROPERTIES**

# 1 Bedroom Apartment located in Leeds

Call us on

**01132782201**

**phil@sjm-properties.com**

**sjm-properties.com**

**Council Tax Band**

**A**

RENT ON THIS PROPERTY INCLUDES SEASONAL BACKGROUND GAS CENTRAL HEATING AT NO EXTRA CHARGE

1 bedroom apartment in the heart of Hyde Park a 2 min walk to the 24hr Sainsburys and Hyde Park Picture House.

The lounge has a wood floor and is furnished with a leather sofas table and chairs and a wall mounted TV.


There is a modern fitted kitchen fitted with a fridge freezer, washer dryer and fan assisted oven with a ceramic hob.

The bedroom has a double bed with a large wardrobe, desk and a desk chair.

The flat benefits from off street parking, secure entry and an alarm.

The seasonal background gas central heating is included in the rent at no extra charge.

Copy and paste for video tour - <https://www.youtube.com/watch?v=5bs7aU79Qig&list=PLtPltWnm1C1-xv4tYo2eJNUBW8i6LnFrc&index=10>

Energy Efficiency Rating		
	Current	Potential
Very energy efficient - lower running costs		
(92 plus) <b>A</b>		
(81-91) <b>B</b>		
(69-80) <b>C</b>		
(55-68) <b>D</b>		
(39-54) <b>E</b>		
(21-38) <b>F</b>		
(1-20) <b>G</b>		
Not energy efficient - higher running costs		
England & Wales		EU Directive 2002/91/EC 

Agents Note: Whilst every care has been taken to prepare these particulars, they are for guidance purposes only. All measurements are approximate and are for general guidance purposes only and whilst every care has been taken to ensure their accuracy, they should not be relied upon and potential buyers are advised to recheck the measurements.

**SJM**   
**PROPERTIES**